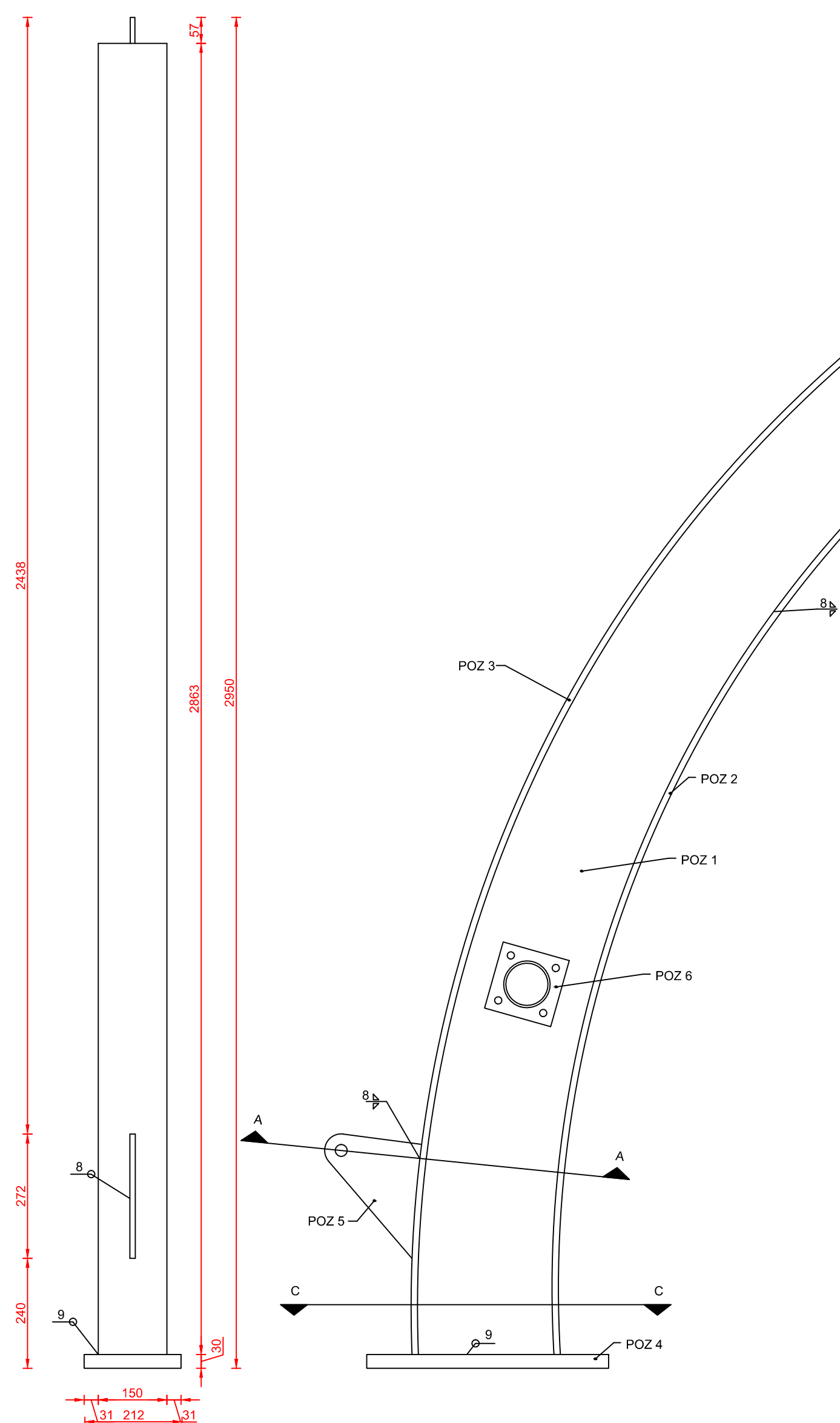
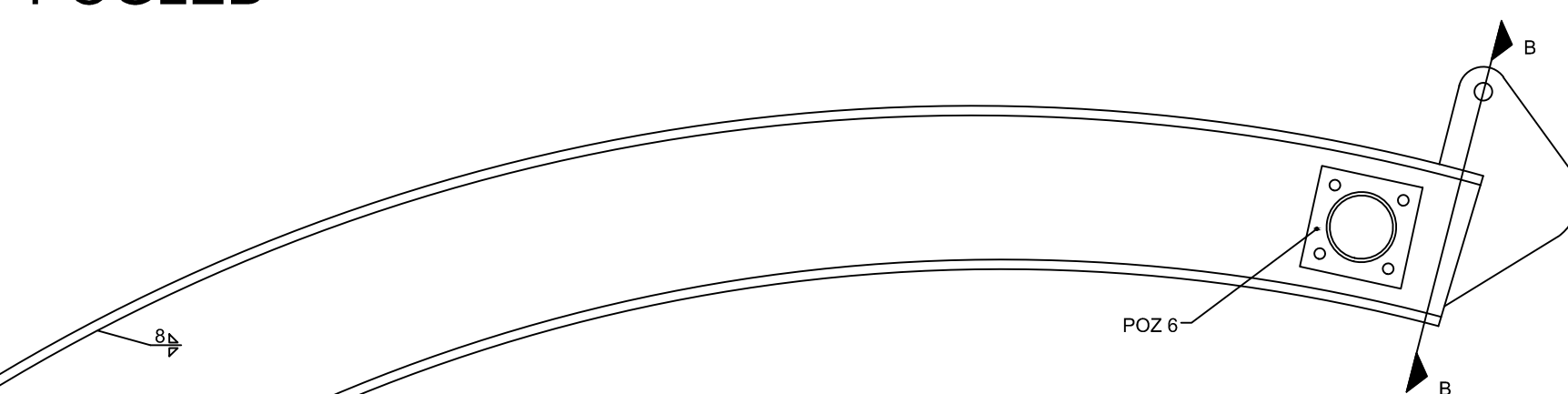
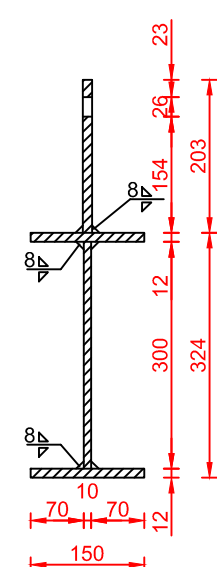


JEKLENA PODKONSTRUKCIJA

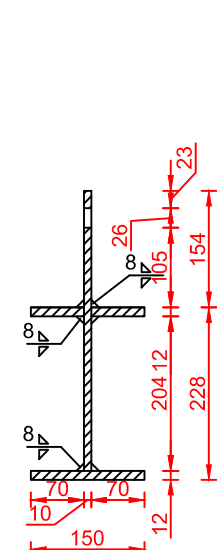
POGLED

STRANSKI
POGLED

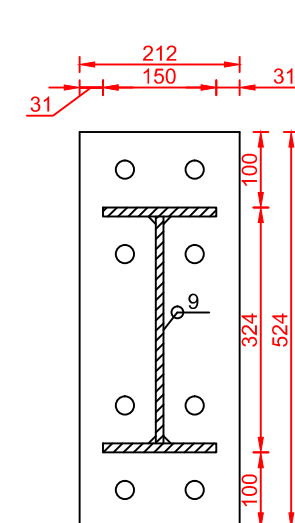
PREREZ A-A



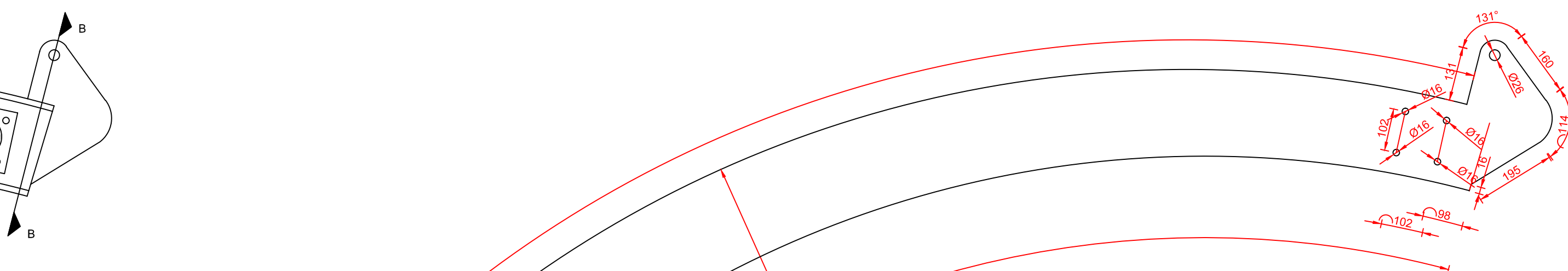
PREREZ B-B



PREREZ C-C

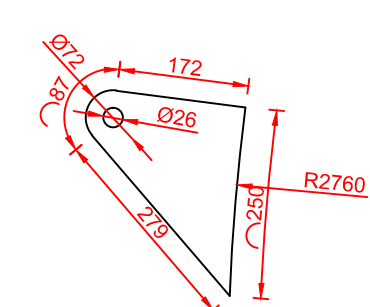


POZ 3

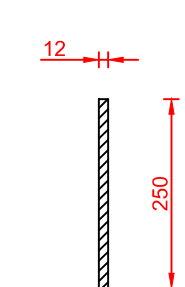


POZ 5

TLORIS

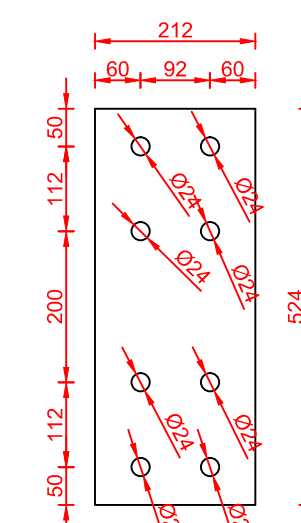


PREREZ

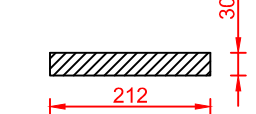


POZ 4

TLORIS

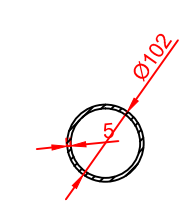


PREREZ

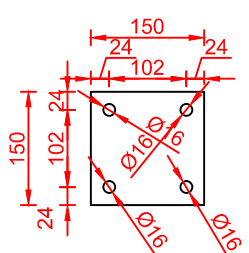


POZ 6

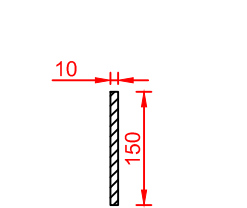
PREREZ



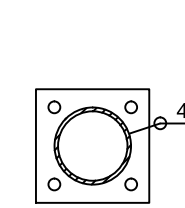
TLORIS



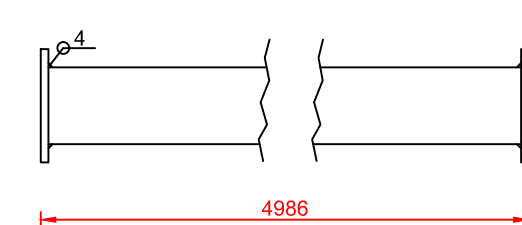
PREREZ



TLORIS

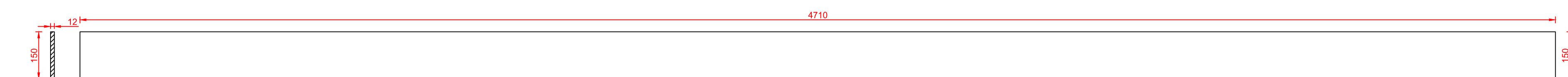


STRANSKI POGLED SESTAVA



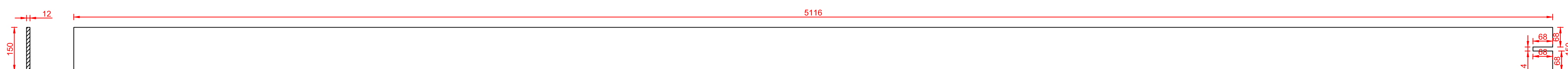
POZ 1

PREREZ TLORIS



POZ 2

PREREZ TLORIS



OPOZORILO: Zgornji robovi POZ 2, morajo biti obrušeni v radiju $R = 1 \text{ mm}$.

Jeklo S 275

Jekleni lok 4 kos

Pozicija	št. kosov	t [mm]	A [mm ²]	teža [kg]
1	1	12	702300	66,2
2	1	12	766448	72,2
3	1	10	1.261.131	99,0
4	1	30	111936	26,4
5	1	12	30403	2,9
Skupaj				266,6 kg

Jeklana prečka 6 kos

Pozicija	št. kosov	t [mm]	A [mm ²]	teža [kg]
1	2	10	22500	3,5
	1	Cev ϕ 100/5mm		59,4
Skupaj				62,9 kg

Opomba: Vse dimenzije so v milimetrih.

Oznaka: /	Revidiral: /	Datum revizije: /	Opis revizije: /	Rev. št.: /
Projekt: Prednapeta membranska konstrukcija za prekritje kolesarnice			Načrt: Delavniške risbe podkonstrukcije	
Številka projekta: 001/2015	Izdelal: Primož Zelenec	Datum izdelave September 2015	Del objekta: Jeklena podkonstrukcija	Merilo: 1:100
Univerza v Ljubljani Fakulteta za gradbeništvo in geodezijo			Šifra elementa: /	Stran: Priloga E